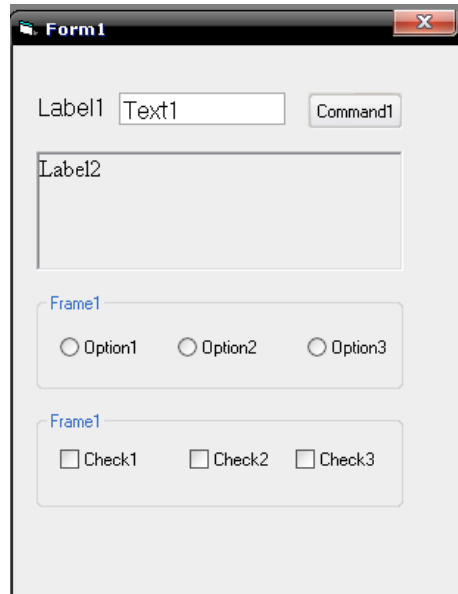


Dalam pembahasan kali ini kita akan mengulas bagaimana cara menampilkan text dari textfield ke label dan merubah warna serta fontstyle yang kita gunakan. Caranya sangat mudah sekali, untuk lebih jelasnya mari kita ikuti langkah langkah berikut ini :

langkah 1 : buat dulu form seperti pada gambar di bawah



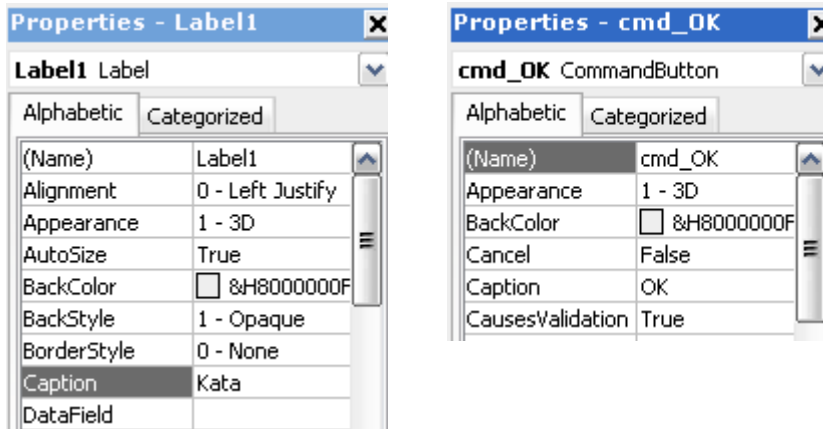
The screenshot shows a Windows form titled "Form1". At the top, there is a text field labeled "Text1" and a button labeled "Command1". Below this is a label "Label2" with a large empty rectangular area underneath it. Further down, there are two frames, both titled "Frame1". The first frame contains three radio buttons labeled "Option1", "Option2", and "Option3". The second frame contains three checkboxes labeled "Check1", "Check2", and "Check3".

Langkah 2 : ganti semua caption maupun text dari masing-masing tombol pada properties Sehingga tampilan form menjadi seperti dibawah ini



The screenshot shows a Windows form titled "Menampilkan Kata". At the top, there is a text field labeled "Kata" and a button labeled "OK". Below this is a label "Kata" with a large empty rectangular area underneath it. Further down, there are two frames. The first frame contains three radio buttons labeled "Red", "Blue", and "Black". The second frame contains three checkboxes labeled "Bold", "Italic", and "Underline".

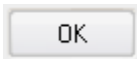


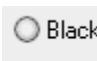
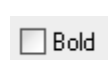
Contoh :



Kemudian ganti juga(Name) dari tiap tiap tombol :

1. Text1 == txt_input
2. Command1 == cmd_OK
3. Label2 == lb_output
4. Option1 == op_Red
5. Option2 == op_Blue
6. Option3 == op_Black
7. Check1 == ck_Bold
8. Check2 == ck_Italic
9. Check3 == ck_Underline

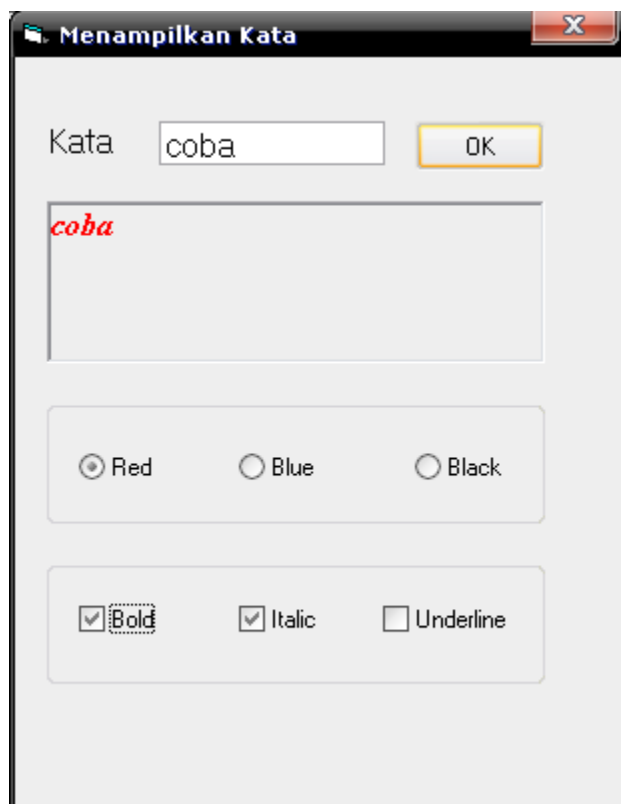
Langkah 3 : masukkan kode-kode program pada masing-masing tombol yang aka kita beri perintah, yaitu dengan mengklik dua kali pada tombol yang akan kita beri perintah kemudian tuliskan kode-kode tersebut diantara public sub _() dan end sub.

1. Tombol  : lb_output.Caption = txt_input.Text
2. Tombol  : lb_output.ForeColor = vbRed
3. Tombol  : lb_output.ForeColor = vbBlue
4. Tombol  : lb_output.ForeColor = vbBlack
5. Tombol  : If lb_output.FontBold = False Then
lb_output.FontBold = True
Else
lb_output.FontBold = False
End If

6. Tombol Italic : If lb_output.FontItalic = False Then
lb_output.FontItalic = True
Else
lb_output.FontItalic = False
End If

7. Tombol Underline : If lb_output.FontUnderline = False Then
lb_output.FontUnderline = True
Else
lb_output.FontUnderline = False
End If

Langkah terakhir adalah test mengetest program :



mungkin cukup sekian dulu dari saya, selamat mencoba dan semoga bermanfaat ...